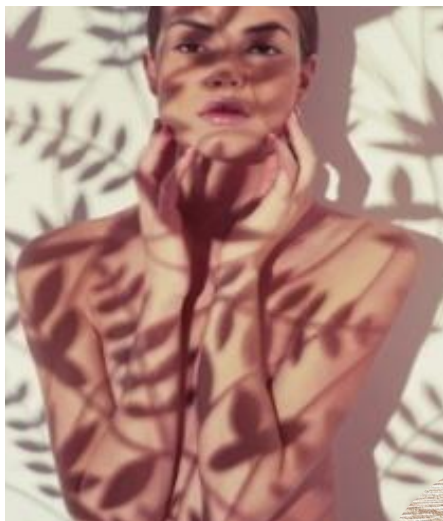




SKIN CARE

EU07446A | EXPRESS MINIMALIST BODY LOTION

With organic chamomile flower - Bio By SEPPIC



O/W Emulsion

NOC = 95,0%
NATURALITY PROFILE according to ISO 16128 norm

Body Care

Slimness & Firmness

Formulated with COSMOS approved ingredients

A	MONTANOV™ L	2.50%
	Glycerin	2.00%
	Water/Aqua	28.35%
B	Organic virgin plum oil	1.00%
	EMOGREEN™ L19	2.50%
	Tocopherol	0.15%
C	SOLAGUM™ AX	0.80%
D	Water/Aqua	40.00%
	Orange Blossom Floral Water Organic	17.00%
	KALPARIANE™	1.00%
	ADIPOSLIM™	1.50%
	Chamomile Flower Extract Organic	1.00%
	Organic Aloe Vera Extract	1.00%
	Benzyl Alcohol and Benzoic Acid and Dehydroacetic Acid	0.80%
	Triethanolamine	qs pH
Parfum/Fragrance	0.40%	

White fluid emulsion / Packaging : TubepH: 5.7 / **VISCOSITIES**: 1M at RT 3 200 mPa.s Brookfield LV2-6;

1M at 45°C 2 100 mPa.s Brookfield LV2-6

Viscosity recovery at RT (after 1M at 45°C): 3 000 mPa.s Brookfield LV4-6.**STABILITY**: >1M.**FORMULATION ADVICES: Pilot - 5 Kg - Trimix -**

Heat the aqueous phase A in the tank to 85°C. Melt phase B at 60°, then add SOLAGUM AX and leave to heat for 2 min. Pour the phases B+C on A and emulsify 10 min at 3000 rpm with the rotor-stator. Cool gradually. At 40°C add phase D, then shear again for 5 min at 3000 rpm at the rotor-stator. Allow to cool by applying vacuum several times to debubble.

Concentrated emulsion process for refining/stabilizing fluid emulsions

This slimming & firming body care moisturizes and stimulates the skin.

This fluid, natural and minimalist emulsion offers a comfortable, non-sticky spread.

KALPARIANE™ moisturizes, firms and tones the skin. (Caprylic/Capric Triglyceride/Alaria esculenta Extract)

Oily active from alaria esculenta brown alga to **maintain suppleness and firmness of the skin**. Hydration and suppleness of the skin (in vivo study)

ADIPOSLIM™ refines the silhouette (Sorbitan Laurate and Lauryl Prolinole)

A **dual action** to correct existing "orange skin aspect" inhibits and eliminates fat storage for "Top Model" shape adipocytes (in vivo and in vitro proven efficacy versus placebo). Ecocert approved.

MONTANOV™ L is ideal for obtaining milks with **fluid viscosity and stable over time.** (C14-22 Alcohols and C12-20 Alkyl Glucoside)

Glucolipid emulsifier in harmony with nature made in France. It is well-suited to formulate different textures (from sprayable to butter cream) no matter the nature or the quantity of fatty phase used. It stabilizes emulsions, and has a strong moisturizing power since it promotes **liquid crystals** which prevent the skin from dehydration and boosts the action of active ingredients). COSMOS and Natrue approved.

EMOGREEN™ L19 (C15-19 Alkane (Plant-based & Renewable))

It's a non polar and biodegradable, **bio-sourced emollient**. It's THE alternative to silicone oils. This high purity vegetable alkane is conformed to Cosmos and Natrue. It gives a fresh and gliding touch, with a soft afterfeel.

SOLAGUM™ AX, natural gum, by itself **stabilizes** the formula without providing a sticky or runny effect.

Acacia Senegal Gum and Xanthan Gum)

ADDITIONAL INGREDIENTS: Benzyl Alcohol - Benzoic Acid - Dehydroacetic Acid: EUXYL K903 (Schülke & Mayr) / Ailres: fournisseurs - Organic virgin plum oil: Prunus Domestica Seed Oil (PERLE DE GASGOGNE) / Orange Blossom Floral Water Organic: Citrus Aurantium Amara Flower Water, Citric Acid, Potassium Sorbate, Sodium Benzoate - Hydrolat Oranger fleur CBIO PRH (HERBAROM) / Chamomile Flower Extract Organic: Chamomilla Recutita (matricaria) Extract (BIO BOTANICA) / Organic Aloe Vera Extract: Aloe Barbadosis Leaf Juice, Glycerin, Aqua : Aloe Vera Extract (BOTANICA) / Parfum/Fragrance: 0.2% Citrus Lime (Givaudan) - 0.2% Hesperide Natiflor (TECHNICO FLOR)

A formula related to COSMOS concept

More informations available on seppic.com

SEPPIC

All information contained herein is intended merely to demonstrate the utility of Seppic products, and should not be construed as granting license to practice any compositions or methods covered by a patent or a patent application. All information contained in this specific technical documentation is believed to be accurate and has been set up by Seppic according to its own described methods and processes. Seppic however does not assume any liability or risks involved in the use of its products for the preparation and the assessment of the hereinabove formulation since the condition of use are beyond its control. Seppic customer must insure that the duplication of the hereinabove formulation is not infringing any intellectual property rights and that it complies with any regulatory status.

A company
Air Liquide
HEALTH CARE