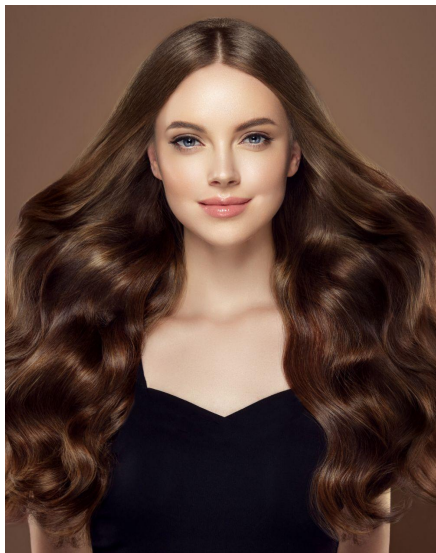




HAIR CARE

US20203 | "ROOT-TO-TIP" ULTIMATE SHAMPOO

A lightweight foamy shampoo for all hair types

NATURALITY
PROFILE
according to
ISO 16128 norm

Shine Booster

Deep Hydration

Protects Against Outside

Damaging Agents

A	Water XYLISHINE™ BIOENERGIZER™ P BG PF	44.80% 3.00% 5.00%
----------	--	--

B	Water Glycerin FLUIDIFEEL™ EASY	3.00% 7.00% 3.00%
----------	--	--------------------------------

C	EMOGREEN™ HP40 Fragrance "Rose Saffron" Benzyl Alcohol (and) Benzoic Acid (and) Dehydroacetic Acid (and) Tocopherol SEA SATIN™	3.00% 0.20% 1.00% 1.00%
----------	--	--

D	SEPIMAX ZEN™	2.00%
----------	---------------------	--------------

E	PROTEOL™ OAT PF ORAMIX™ L30	10.00% 17.00%
----------	--	--------------------------------

Translucent cream/ Packaging: Bottle**pH: 5.4 / VISCOSITIES: 1D at RT:** 30,100cps; Brookfield LV64 @6rpm**Recovery at RT (after 1M at 45°C):** In-progress**STABILITY:** In-progress**FORMULATION ADVICES: Laboratory scale - 300 g - Agitation tool**

Combine phase A and mix well. Combine phase B and mix well for 10 minutes with U-shape blade at 50-70rpm. Combine phase C and mix well. While agitating phase B at 120-140rpm, slowly add phase C. Continue to agitate for 10 minutes with U-shape blade. Add phase A slowly to phase BC while mixing phase BC at 140rpm and mix for 10 minutes. Move phase ABC to defocculator (Ross) and agitate to create a vortex and sprinkle in phase D. Continue to agitate with defocculator until a smooth emulsion is formed. Now slowly add phase E and decrease mixing speed if necessary to avoid bubble. Check and adjust to pH 5 - 5.5.

A nourishing shampoo that will work on the three levels of the hair: scalp, mid-length, and tips for an ultimate shower experience.

Taking haircare to the next level!

Offering an unctuous, abundant foam without any drying effect! **PROTEOL™ OAT PF** and **ORAMIX™ L30**

PROTEOL™ OAT PF (Sodium Lauroyl Oat Amino Acids) is a **gentle anionic surfactant** inspired by the aminogram characteristic of oat. Thanks to its high tolerance and its excellent foaming power, **PROTEOL™ OAT PF** is **suitable for a lot of applications.**

ORAMIX™ L30 (Sodium Lauroyl Sarcosinate) is a **mild alternative to LESNa** in sulfate free formulations. **Offers higher foaming properties than LESNa.** Respects the structure of skin and **provides abundant, light and soft foam.**

SEPIMAX ZEN™ (Polyacrylate Crosspolymer-6) a powder polymer that offers maximum resistance to electrolytes (salts and active ingredients). **Provides a gel like appearance with a velvety, rich and elegant feel.** It has **oil stabilizing and suspending properties.**

FLUIDIFEEL™ EASY (Lauryl Glucoside - Myristyl Glucoside - Polyglyceryl-6 Laurate), **emulsifies and stabilizes the formula, it provides a "nude" skin feel.** O/W glycolipidic emulsifier processable at room temperature.

This high purity versatile texturing ingredient **brings comfort to the skin.** Multifaceted ingredient, it provides **film forming properties** with a **soft and supple afterfeel.** **EMOGREEN™ HP40** (C15-19 Alkane and Hydrogenated Polyfarnesene (Plant-based & Renewable)). Gives unctuousity, powdery finish and let a film at the surface of the skin, a non polar and inherently biodegradable, bio-sourced emollient. It's a **sustainable alternative to heavy silicones** in formulation.

XYLISHINE™ (Xylitylglucoside and Anhydroxytilol and Maltitol and Xylitol and Pelvetia Canaliculata Extract) **Moisturizes and repairs the hair.** it helps **maintain the deep hydration of the hair and protect the fiber.** The natural sugars of vegetal and marine origin **makes the hair glossy and soft.** #Bio-Inspiration

SEA SATIN™ (Caprylic/Capric Triglyceride (and) Beta Vulgaris (Beet) root Extract) An oil soluble marine plant extract based off Beta Maritima (Sea Beet). **Known for its ability to provide treatment from the root to the tip of the hair,** Sea Satin **gives protection from oxidative stress** and other factors which cause **hair aging, hair loss and scalp irritation,** Sea Satin **restructures the hair.**

BIOENERGIZER™ P BG PF (Aqua/Water - Butylene Glycol - Panthenol - Propylene Glycol - Pelvetia Canaliculata Extract - Laminaria Digitata Extract) **A 3-in-1 tonic cocktail, rich in panthenol and seaweed extracts, with hair growth and density boosting effects.**

ADDITIONAL INGREDIENTS: Benzyl Alcohol - Benzoic Acid - Dehydroacetic Acid - Tocopherol K903 (SCHULKE) / Fragrance "Rose Saffron" (SOZIO)

More information available on seppic.com

Air Liquide
HEALTH CARE

seppic

All information contained herein is intended merely to demonstrate the utility of Seppic products, and should not be construed as granting license to practice any compositions or methods covered by a patent or a patent application. All information contained in this specific technical documentation is believed to be accurate and has been set up by Seppic according to its own described methods and processes. Seppic however does not assume any liability or risks involved in the use of its products for the preparation and the assessment of the hereinabove formulation since the condition of use are beyond its control. Seppic customer must insure that the duplication of the hereinabove formulation is not infringing any intellectual property rights and that it complies with any regulatory status. Formula only for demonstration purposes.